



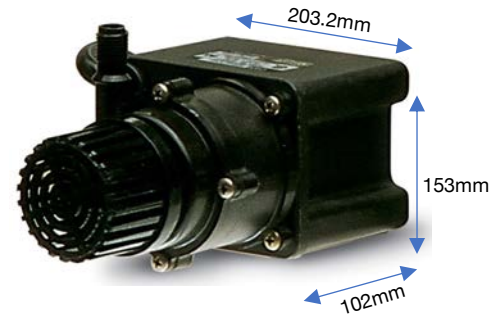
# PE-1.5-MDI-SC Submersible Pump

The Little Giant PE-1.5-MDI-SC series features leakproof, seal-less magnetic drives and are designed for submersible use only. Volute, magnet housing and impeller are glass-filled polypropylene for excellent chemical resistance. Ceramic shaft and thrust washers are 99.5% pure alumina for excellent wear and trouble-free service. Pumping heads are easily rotated, cleaned or serviced with no special tools required. Spindle shaft is supported at both ends to prevent impeller damage during start-up and stop of pump

## Features

- Thermally protected, epoxy encapsulated motor n FOR SUBMERSIBLE USE ONLY
- 1.8m power cord
- Specific gravity to 1.1
- Fluid temperature to 25°C

**NOTE:** Consult your local distributor or the factory for applications with higher ambient temperatures, specific gravities and viscosities.

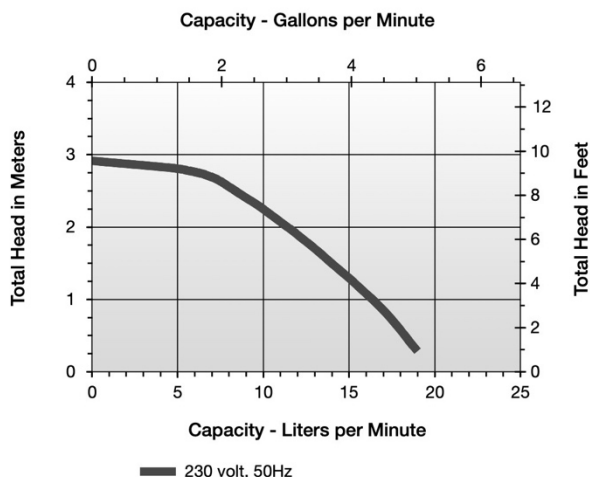


## Construction

- Volute — Glass-filled polypropylene
- Magnet Housing — Glass-filled polypropylene
- Impeller — Glass-filled polypropylene
- Shaft — Ceramic
- Thrust Washers — Ceramic
- O-Ring — Nitrile
- Motor Housing — Polyester/Polyethylene/ Epoxy/PVC

<b>Capacity:</b>	19 LPM
<b>Shut Off:</b>	2.9m
<b>Liquid Temp:</b>	49°C
<b>Discharge:</b>	6 mm O.D.
<b>Intake:</b>	12.7mm
<b>Electrical:</b>	230V, 50Hz
<b>MODEL:</b>	<b>589237</b>

Performance Curve PE-1.5-MDI-SC 230V,50Hz





## PE-1.5-MDI-SC

### Introduction

This instruction sheet provides you with the information required to safely own and operate your product. Retain these instructions for future reference.

The product you have purchased is of the highest quality workmanship and material, and has been engineered to give you long and reliable service. This product has been carefully tested, inspected, and packaged to ensure safe delivery and operation. Please examine your item(s) carefully to ensure that no damage occurred during shipment. If damage has occurred, please contact the place of purchase. They will assist you in replacement or repair, if required.

**READ THESE INSTRUCTIONS CAREFULLY BEFORE ATTEMPTING TO INSTALL, OPERATE, OR SERVICE YOUR PRODUCT. KNOW THE PRODUCT'S APPLICATION, LIMITATIONS, AND POTENTIAL HAZARDS. PROTECT YOURSELF AND OTHERS BY OBSERVING ALL SAFETY INFORMATION. FAILURE TO COMPLY WITH THESE INSTRUCTIONS COULD RESULT IN PERSONAL INJURY AND/OR PROPERTY DAMAGE!**

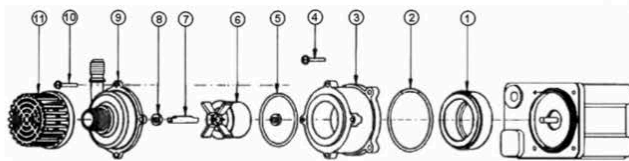
### OPERATION

1. The pump must be run submerged.
2. The pump can be placed in any position.
3. The weight of the pumps must be supported adequately. DO NOT support the pumps by the discharge connection alone. Pump may be supported by using the two mounting holes in the back of the pump. The holes are designed for #8 self-tapping screws. Hole depth is .37-DO NOT exceed the hole depth.
4. Do not let the unit run dry (without liquid). Heat build up caused by friction will damage the pump parts when dry.
5. Do not attempt to restrict the intake side of these pumps. Restricting the intake may cause damage to the seal and may starve the pump. If you require reduced flow rates, then place a valve on the discharge side of the pump or if flexible vinyl tubing is used, a clamp can be used on the tubing to restrict the flow.
6. If the unit is going to be idle for a period of time, follow the cleaning instructions outlined in the next section. Do not let the unit freeze in the wintertime. This may cause cracking or distortion that may destroy the unit.

### SERVICE INSTRUCTIONS

MAKE CERTAIN THE UNIT IS DISCONNECTED FROM THE POWER SOURCE BEFORE ATTEMPTING TO SERVICE OR REMOVE ANY COMPONENT!

1. This unit is permanently lubricated. Oiling is not required.
2. CAUTION: DO NOT remove the magnet housing mounting screws (item 4). Removal of these may result in pump failure or shock hazard.
3. All wetted parts can be serviced by removing the (4) screws (item 10) which hold the volute to the housing.
4. Lightly clean any corrosion or debris which may clog the impeller.
5. If pump is tripping circuit breakers, GFCI, or not operating properly after cleaning, return to Little Giant or its authorized service center. DO NOT attempt repairs yourself.
6. Be certain power cord is in good condition and contains no nicks or cuts.



REPLACEMENT PARTS			
Item	Part No.	Description	Qty.
1	189028	Drive magnet	1
2	924133	O-ring, nitrile	1
3	189045	Magnet housing	1
4	902402	Screw, tapping	4
5	924134	O-ring, nitrile	1
6	189010	Impeller	1
7	189042	Shaft, ceramic	1
8	921077	Thrust washer	2
9	189003	Volute	1
10	902402	Screw, tapping	4
11	118913	Intake filter	1

Table 1