



# TE-4-MD-SC Magnetic Drive – Semi Corrosive Fluids

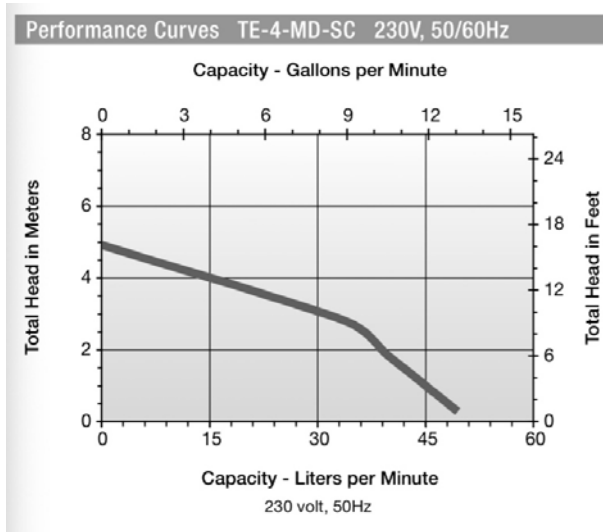
Circulation of semi corrosive acids, alkalis, solvents, brine, plating solutions, sterile solutions, and other mildly corrosive chemicals and solutions that are compatible with the pump's material of construction

- Volute, magnet housing and impeller are glass-filled polypropylene for excellent chemical resistance
- Encapsulated glass-filled polypropylene permanent impeller magnet
- Ceramic shaft and thrust washers are 95.5% pure alumina for excellent wear and trouble-free service
- 1/10 HP TEFC PSC motor
- Glass-filled polypropylene magnet housing and volute
- 1.1 specific gravity
- Nitrile O-ring



**Note: In-Line Only**

<b>RPM:</b>	2750/3000
<b>Capacity:</b>	49 LPM
<b>Shut Off:</b>	4.9m
<b>Liquid Temp:</b>	66°C
<b>Discharge:</b>	12.7 mm
<b>Intake:</b>	25.4 mm
<b>Electrical:</b>	230V, 50/60Hz, 120 Watts
<b>MODEL:</b>	<b>582514</b>

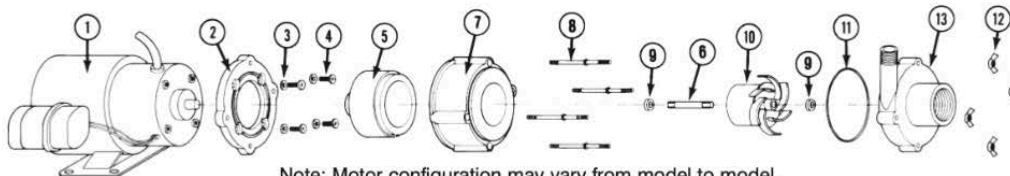




**4-MD-SC**

REPLACEMENT PARTS LIST												
ITEM NO.	PART NO.	DESCRIPTION*	PUMP MODEL & CATALOG NUMBER									
			4-MD-SC 582503	TE-4MD-SC 582514	4-MD-HC 582603	TE-4MD-HC 582604	TE-4MD-HC 582614	4-MDIX-SC 582509	TE-4MDX-SC 582515	TE-4MD-SC 582538	TE-4MD-HC 582638	TE-4MD-SC 582504
1	977442	MOTOR, 115 VOLT	1		1			1				
1	977460	MOTOR, 115 VOLT				1						1
1	977860	MOTOR, 230 VOLT		1			1		1			
1	977864	MOTOR, 230 VOLT, CONDUIT BOX								1	1	
2	180037	MOUNTING BRACKET	1	1				1	1	1		1
2	180048	ADAPTOR			1	1	1				1	
3	921075	WASHER, FLAT, #8	4	4	4	4	4	4	4	4	4	4
4	901424	SCREW, MACH #8-32 X 1/2"	4	4	4	4	4	4	4	4	4	4
5	183602	DRIVE MAGNET ASSEMBLY	1	1	1	1	1	1	1	1	1	1
6	180057	SHAFT, IMPELLER	1	1	1	1	1	1	1	1	1	1
7	182005	HOUSING, MAGNET	1	1					1	1	1	1
7	182006	HOUSING, MAGNET			1	1	1				1	
8	911403	STUD, COLLARED	4	4	4	4	4	4	4	4	4	4
9	921077	WASHER, THRUST	2	2	2	2	2	2	2	2	2	2
10	182132	IMPELLER ASSY.	1	1						1		1
10	182153	IMPELLER ASSY.						1	1			
10	182134	IMPELLER W/BUSHING ASSY.			1		1				1	
10	182156	IMPELLER ASSY. W/MICA BUSHING				1						
11	924007	O-RING, NITRILE	1	1				1	1	1		1
11	924008	O-RING, FLUOROELASTOMER (FKM)			1	1	1				1	
12	920003	NUT, WING #8-32	4	4	4	4	4			4	4	4
12	920020	NUT, HEX #8-32						4	4			
13	182010	VOLUTE	1	1						1		1
13	182012	VOLUTE						1	1			
13	182011	VOLUTE			1	1	1				1	
14	900357101	PTFE TAPE (NOT SHOWN)			1	1	1				1	

\*Parts list applies to products shown. Other models are available; however, parts may vary. For other models, contact Parts Depot, factory, or distributor for replacement parts. Be sure to give the six digit product number and model number when requesting parts.



Note: Motor configuration may vary from model to model.  
TE models are not equipped with metal base. They use the polypropylene adaptor/base.